



Paulmann

### Safety Instructions

1, 2, 3, 4, 5, 6, 7, 8, 16, 19,  
22, 23, 24, 29, 32, 33, 34



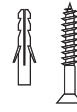
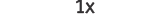
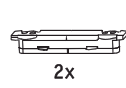
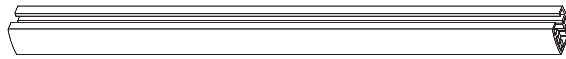
Info

[www.paulmann.com](http://www.paulmann.com)

Paulmann Licht GmbH  
Quezinger Feld 2  
31832 Springe  
Germany

[www.paulmann.com](http://www.paulmann.com)

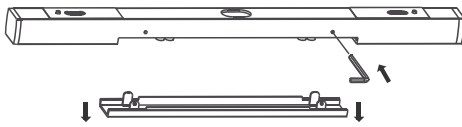
Art.-Nr.: 969.43  
969.44  
969.45  
(+MA326)PH10/20



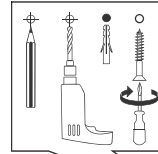
incl.



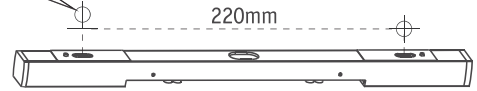
A



B

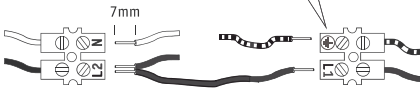


Safety  
Instructions  
Nr. 1-8,19



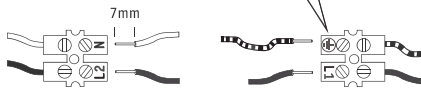
C1 C2

Cable NYM-J  
3x max. 1,5 mm<sup>2</sup>



C1 C2

Cable NYM-J  
5x max. 1,5 mm<sup>2</sup>

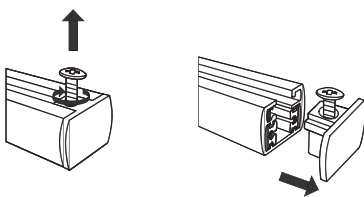


L2 L1

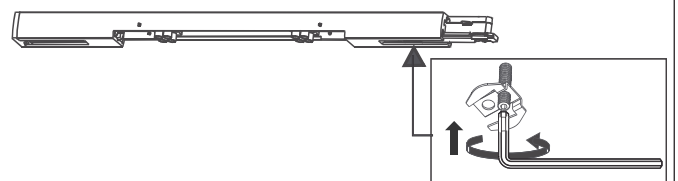


D

1.



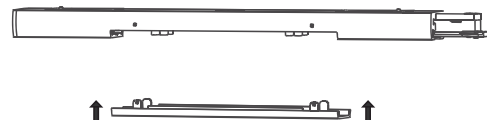
3.



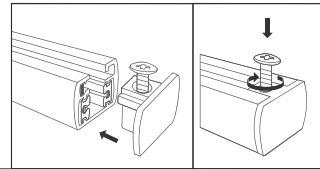
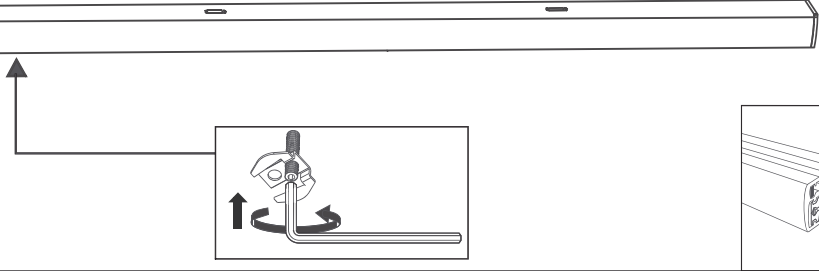
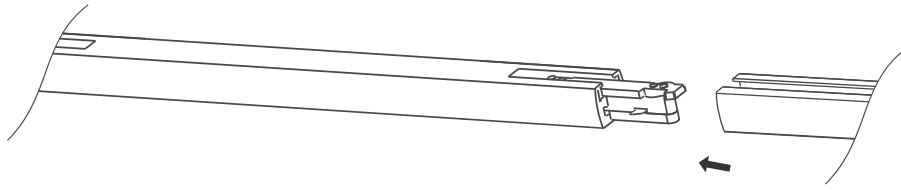
2.



4.



E



 Nr.1-8,19

